

How to install the Printer driver for Windows 2000

Note:

If you start or restart your computer after connecting your printer, the **Found New Hardware Wizard** appears. Click the **Cancel** button to skip it.



For Parallel Interface Cable users only

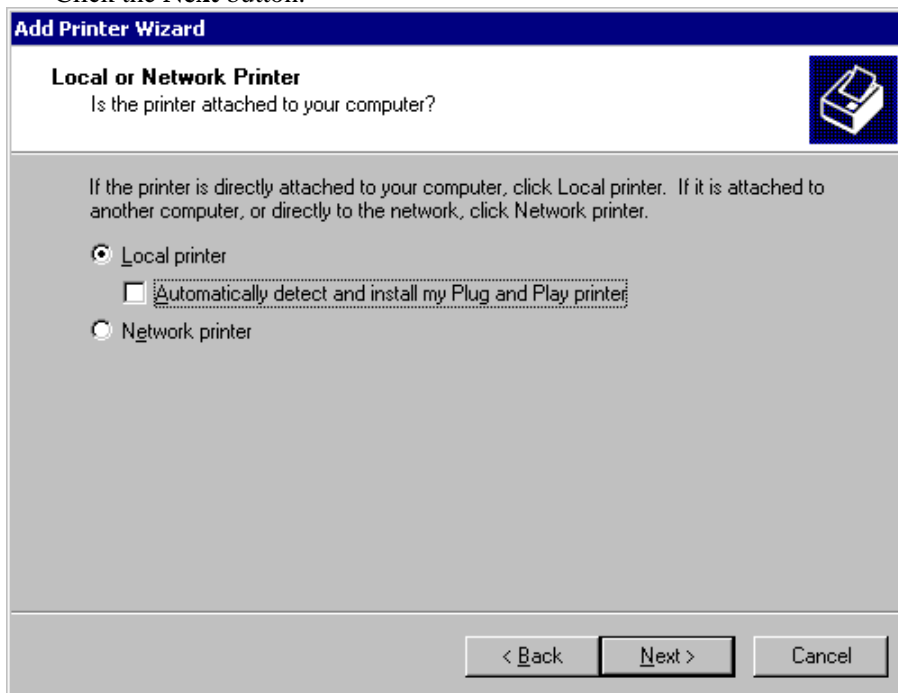
Install the driver

1. Click the **Start**, the **Settings**, and the **Printers** button on your Windows 2000.
2. The **Printers** appears, double-click the **Add printer** icon.

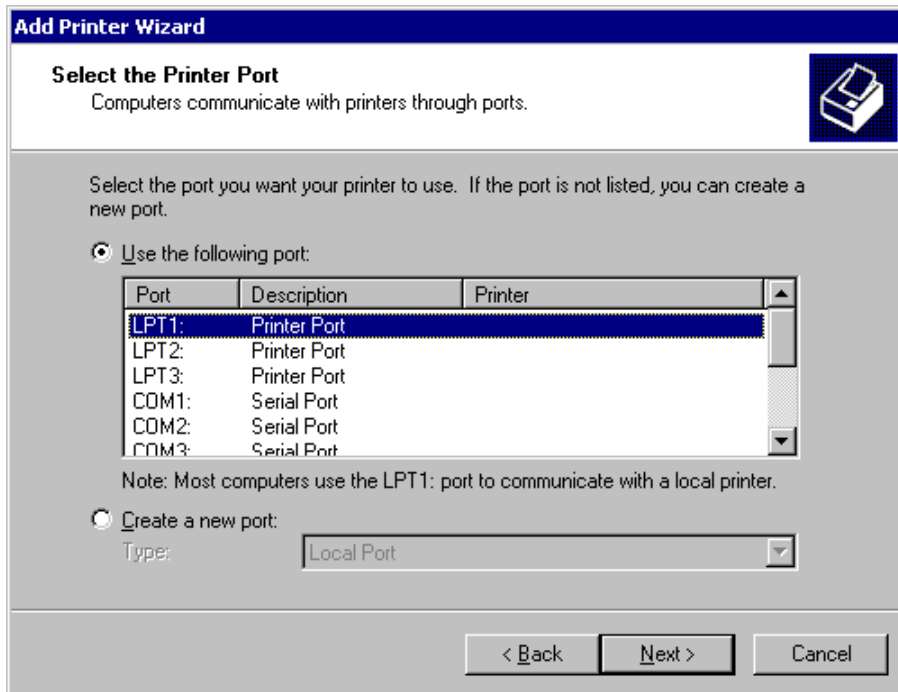
3. The **Add printer wizard** appears, click the **Next** button.



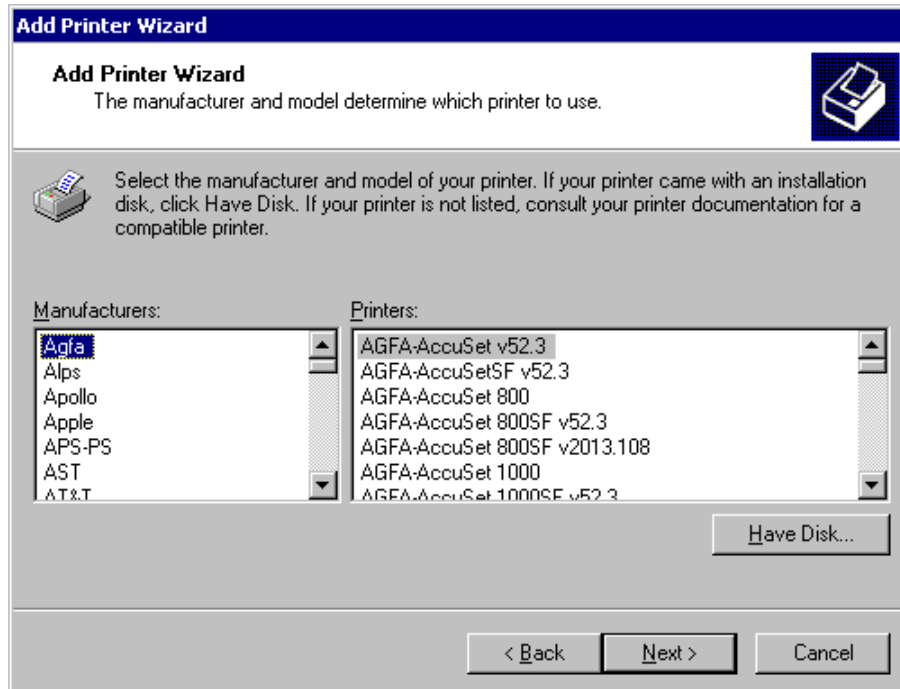
4. Click **Local printer**, make sure **Automatically detect and install my Plug and Play printer** check box is **not** selected. Click the **Next** button.



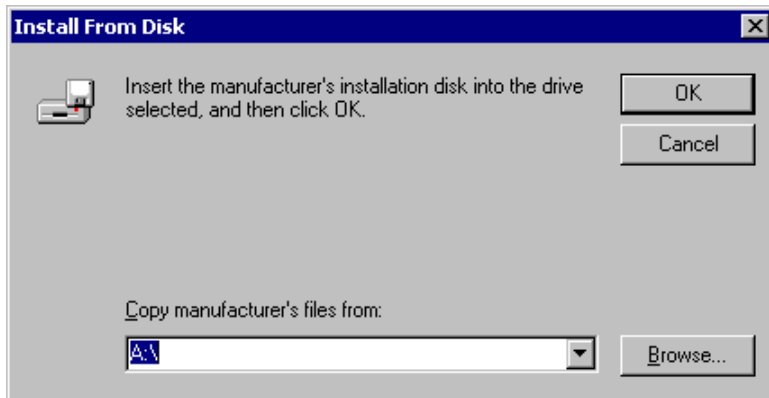
5. Select the Printer Port and click the **Next** button.



6. Click the **Have Disk...** button.



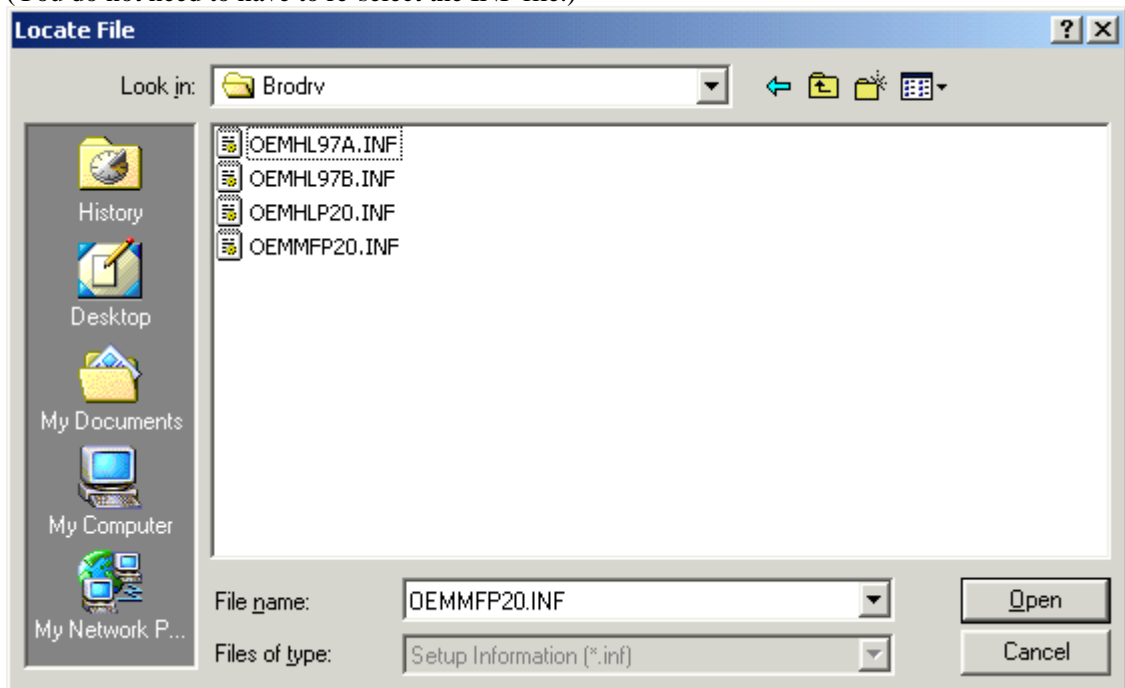
7. Click the **Browse...** button.



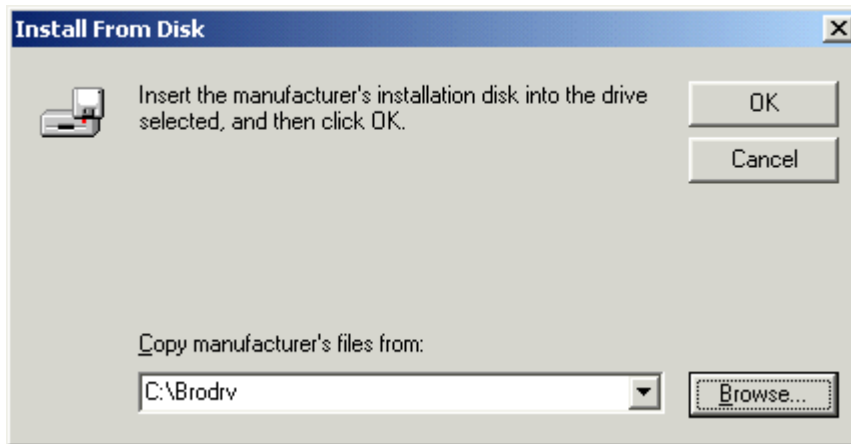
8. Select the drive where you download the printer driver. Select the directory where you download the printer driver, and click the **Open** button.
e.g. C:\brodrv

NOTE:

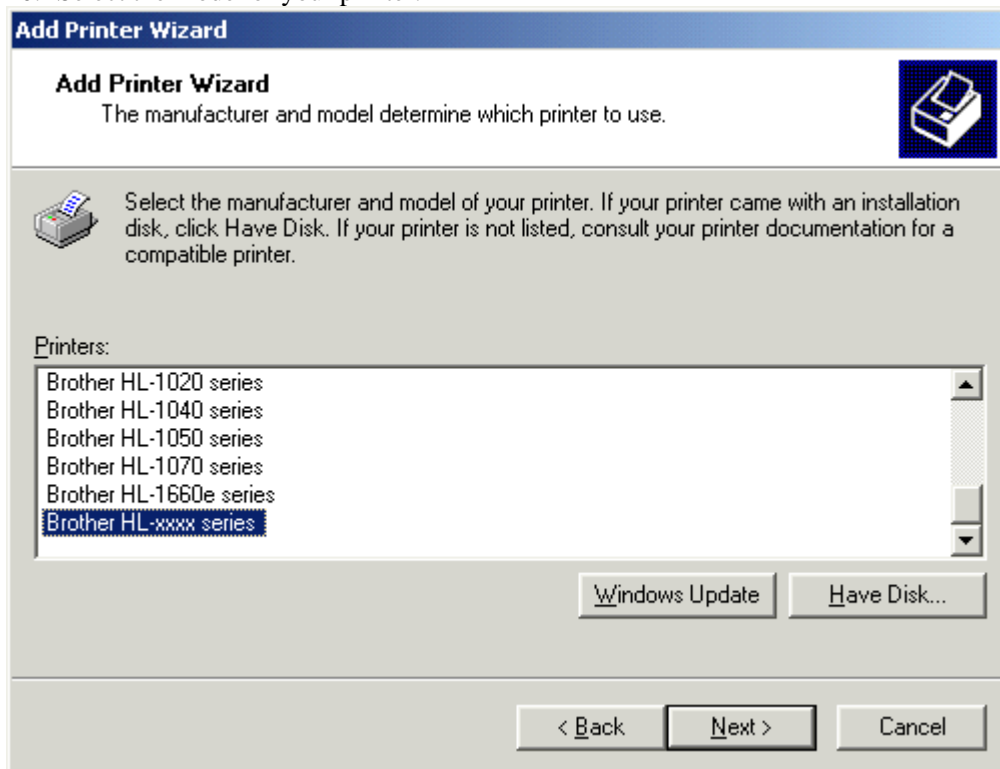
Several INF files may appear in the **Locate File**. You can use the default INF file selected.
(You do not need to have to re-select the INF file.)



9. Select the **OK** button.



10. Select the model of your printer.

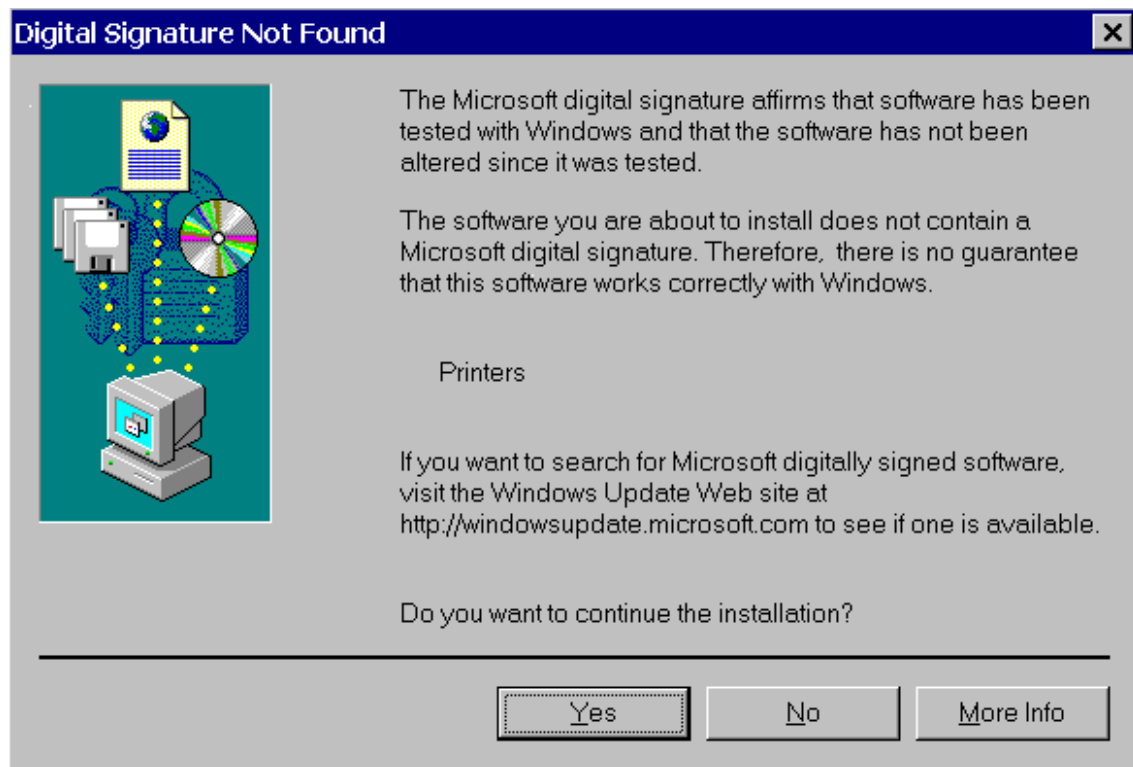


NOTE:

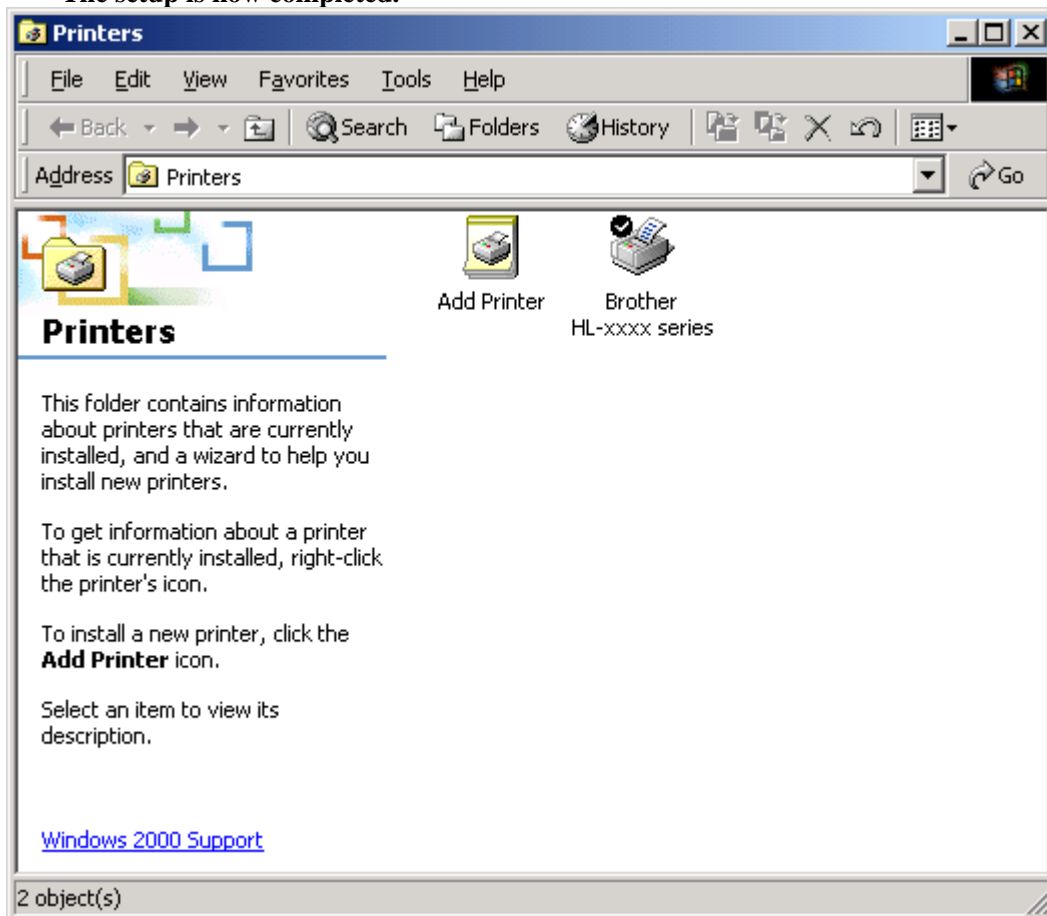
When installing the Brother printer driver into Windows 2000, you may see the following error message on your screen:

***Digital Signature Not Found**

At this point, click the **YES** button to continue the installation. The driver will be installed onto your system.



11. The printer icon will be added to your **Printers** folder.
The setup is now completed.



For USB Interface Cable users only

Install the driver

1. Make sure the printer power switch is on.
2. Connect the USB interface cable to your PC, then connect it to the printer.
3. The **Found New Hardware Wizard** will appear. Click the **Next** button. If this screen does not appear, disconnect the USB interface cable and then connect it again.



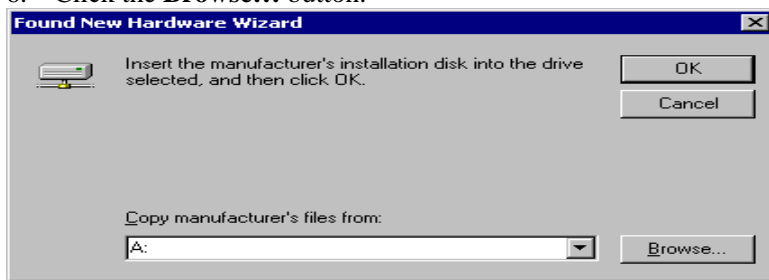
4. Click the **Search for a suitable driver for my device** box and click the **Next** button.



5. Check **Specify a location** and click the **Next** button.



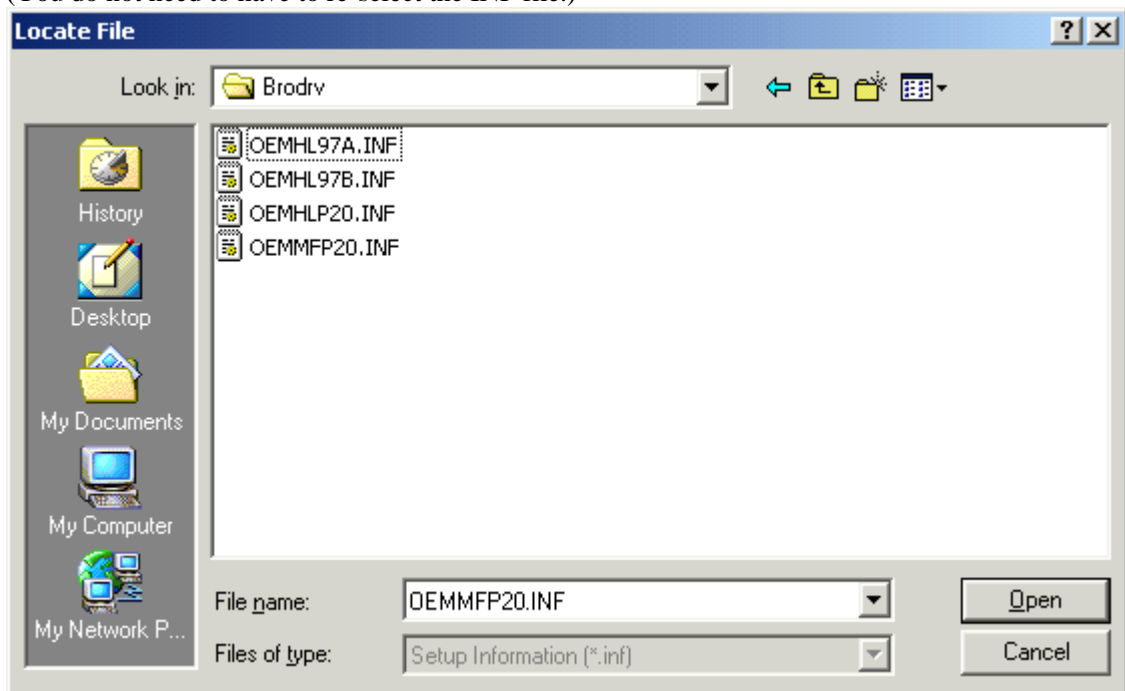
6. Click the **Browse...** button.



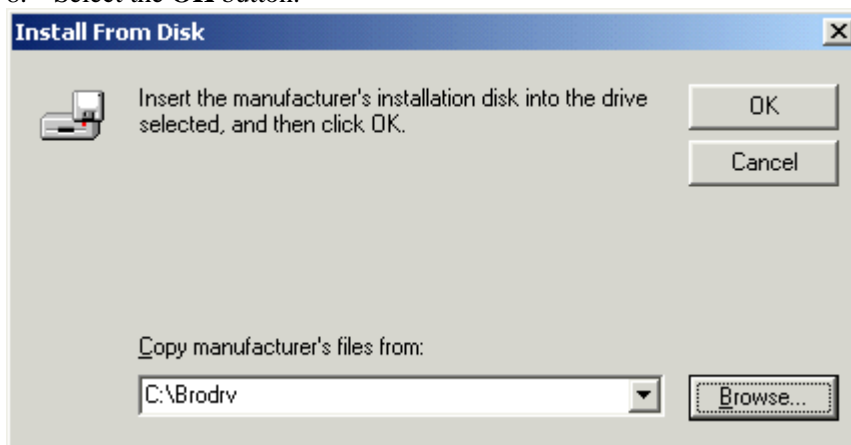
7. Select the drive where you download the printer driver. Select the directory where you download the printer driver, and click the **Open** button.
e.g. C:\brodrv

NOTE:

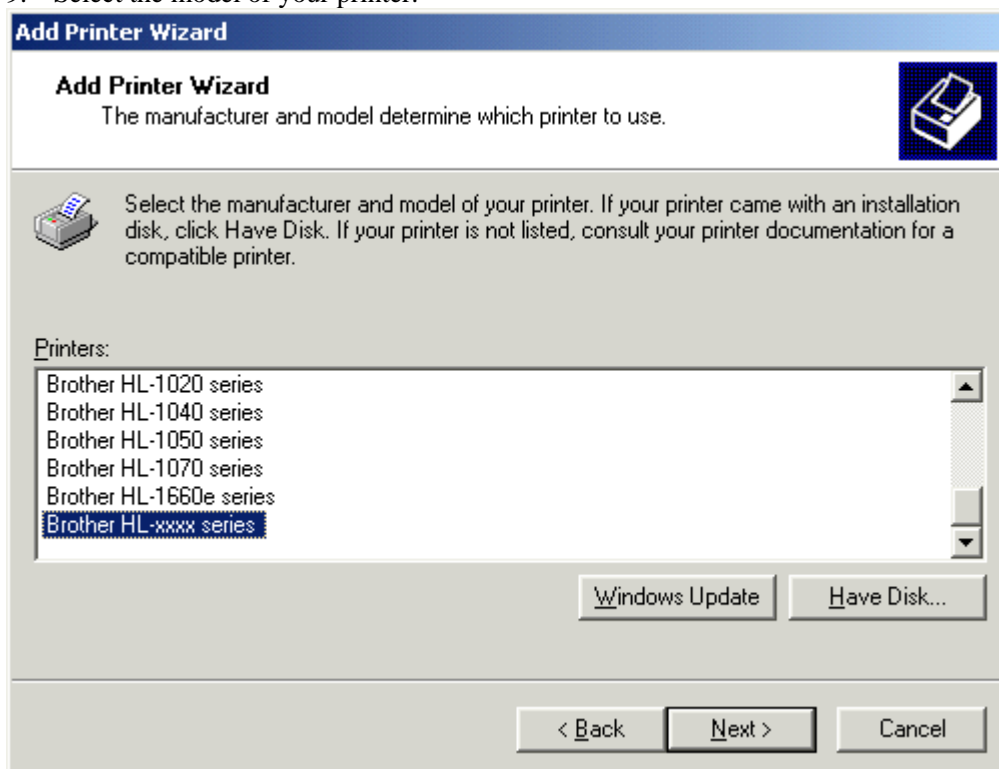
Several INF files may appear in the **Locate File**. You can use the default INF file selected. (You do not need to have to re-select the INF file.)



8. Select the **OK** button.



9. Select the model of your printer.



NOTE:

When installing the Brother printer driver into Windows 2000, you may see the following error message on your screen:

***Digital Signature Not Found**

At this point, click the **YES** button to continue the installation. The driver will be installed onto your system.



10. The printer icon will be added to your **Printers** folder.
The setup is now completed.

