

## **How to install the drivers for Windows 2000**

You need to set up your printer by installing the **Printer Driver** [\[STEP-A\]](#).

If you connect a printer to your PC via Printer Interface Card (CI-100), you need to install the **Printer Interface Card Driver** [\[STEP-B\]](#).

### **Note:**

When installing the Brother drivers into Windows 2000, you may see the following error message on your screen:

**\*Digital Signature Not Found**

At this point, click the **YES** button to continue the installation.

### **Before installing the drivers**

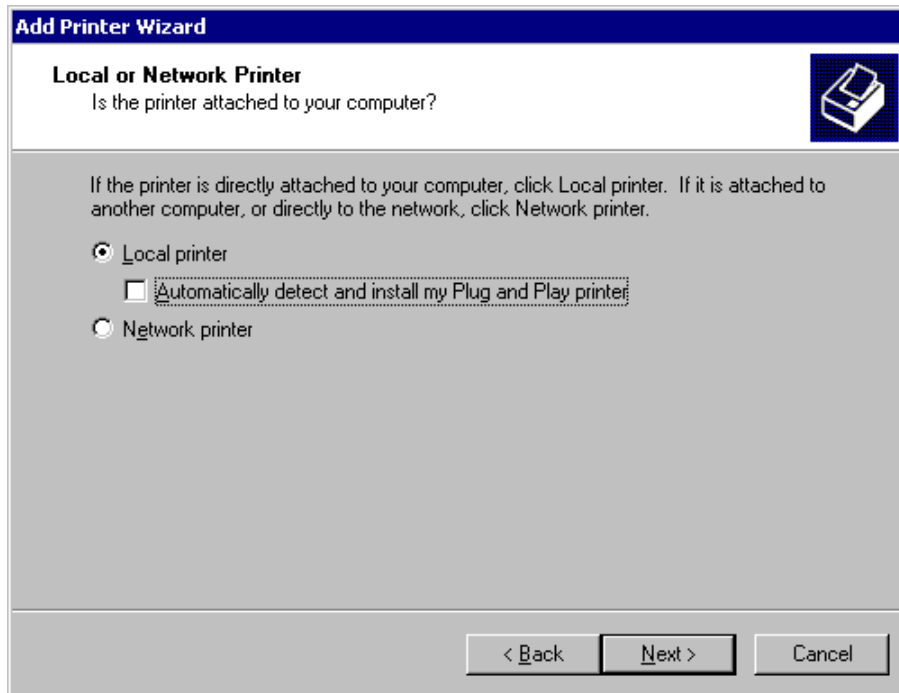
Make sure to copy the extracted Brother driver into a Floppy Disk before installing the Brother driver.

## [STEP-A] Install the Printer driver

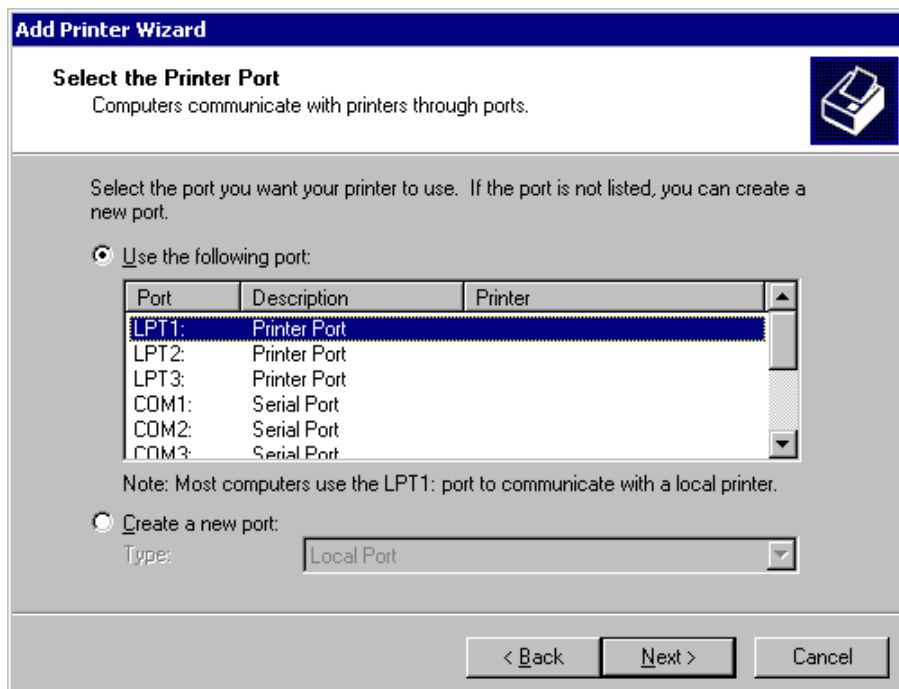
1. Click the **Start**, the **Settings**, and the **Printers** button on your Windows 2000.
2. The **Printers** appears, double-click the **Add printer** icon.
3. The **Add printer wizard** appears. Insert the Floppy Disk that you copied the Brother printer drivers into. Click the **Next** button.



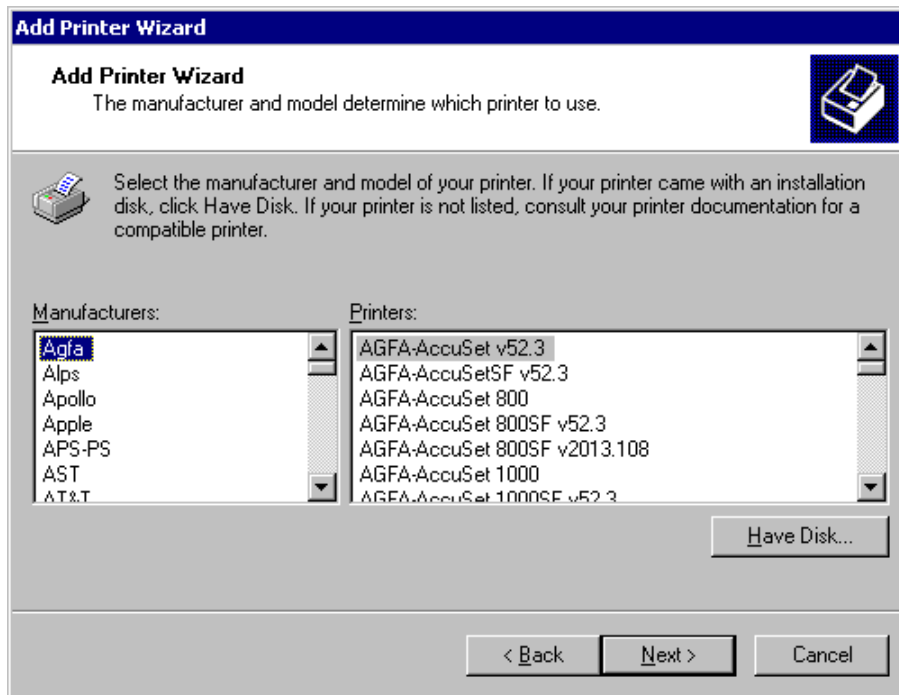
4. Click **Local printer**, make sure the **Automatically detect my printer** check box is **not** selected. Click the **Next** button.



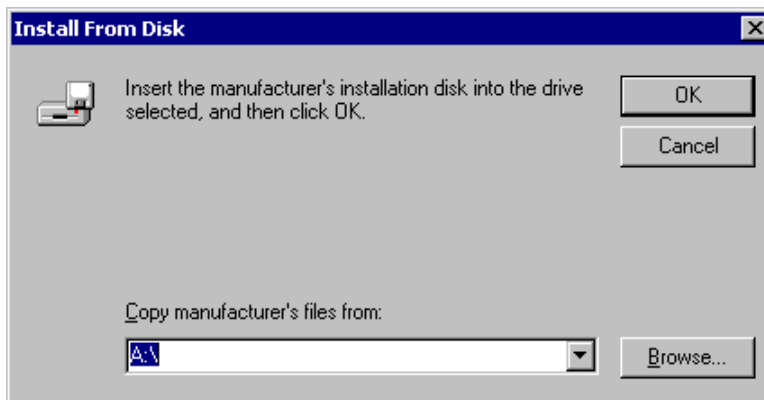
5. Select the Printer Port and click the **Next** button.



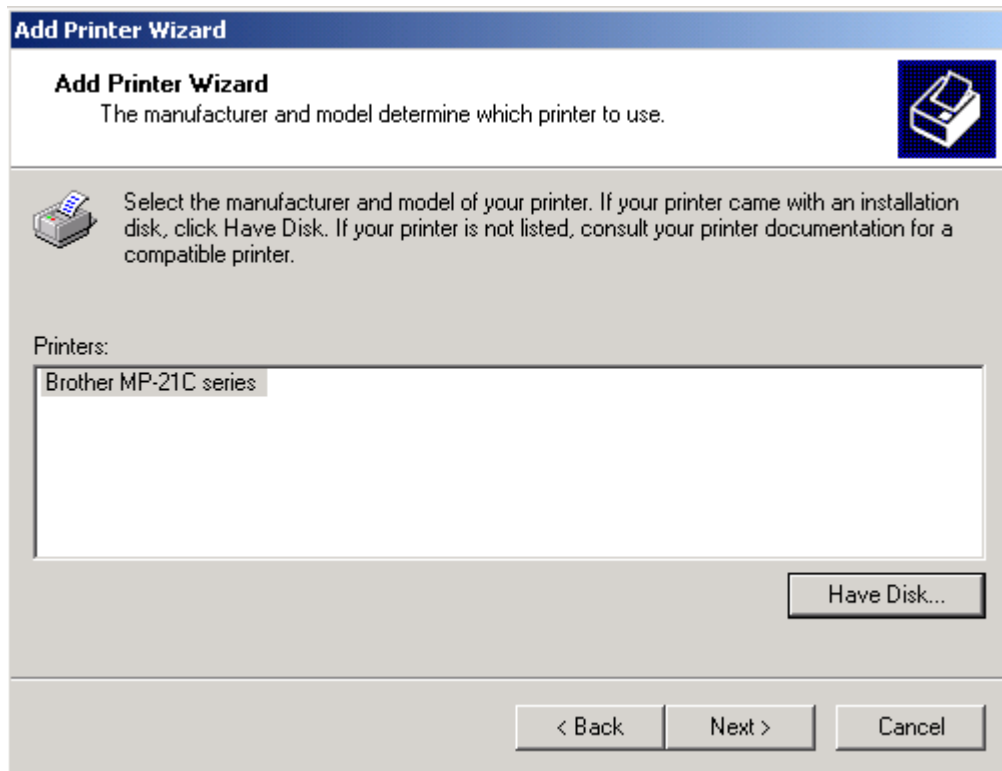
6. Click the **Have Disk...** button.



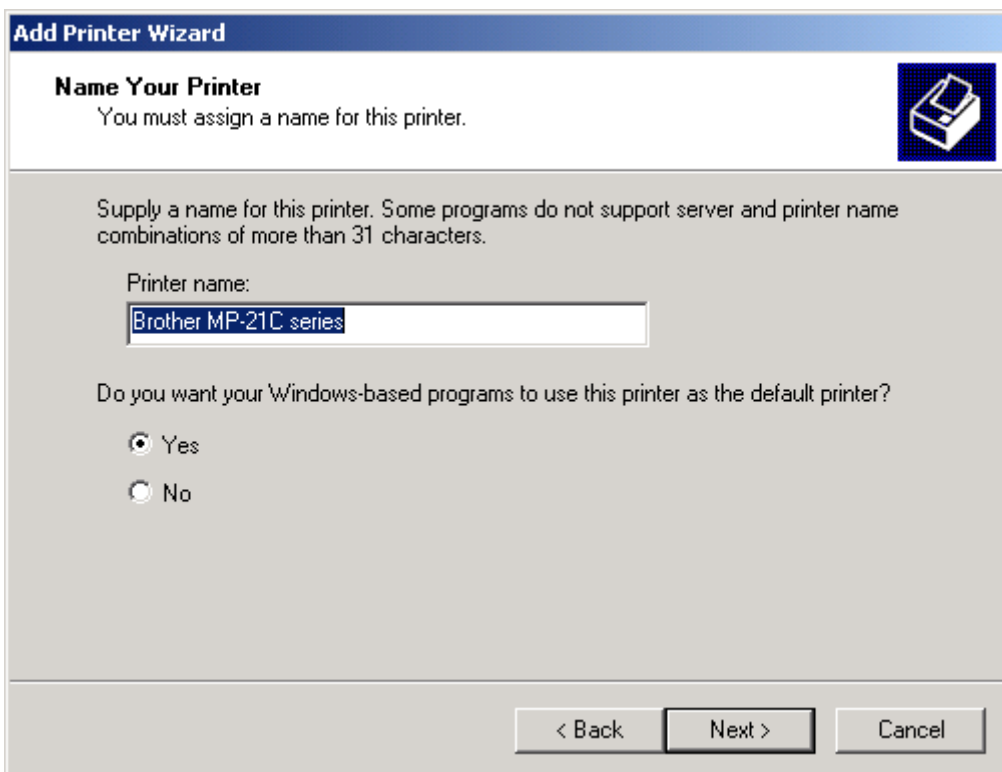
7. Click the **OK** button.



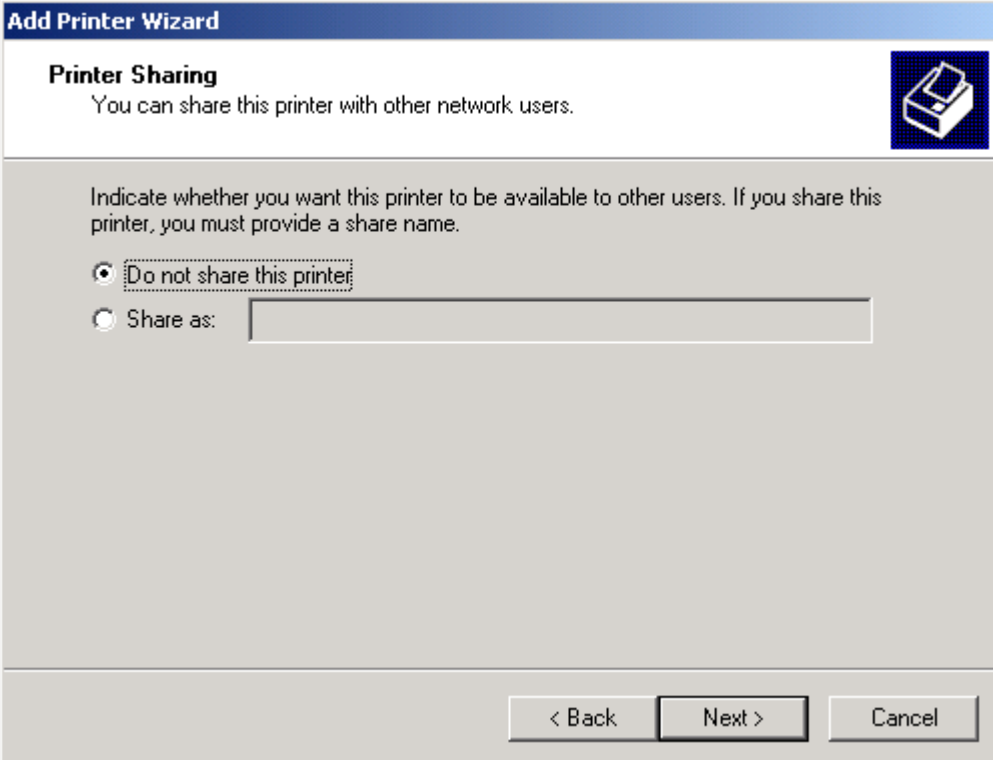
8. Click the **Next** button.



9. Click the **Next** button.



10. Click the **Next** button.



**Add Printer Wizard**

**Printer Sharing**  
You can share this printer with other network users.

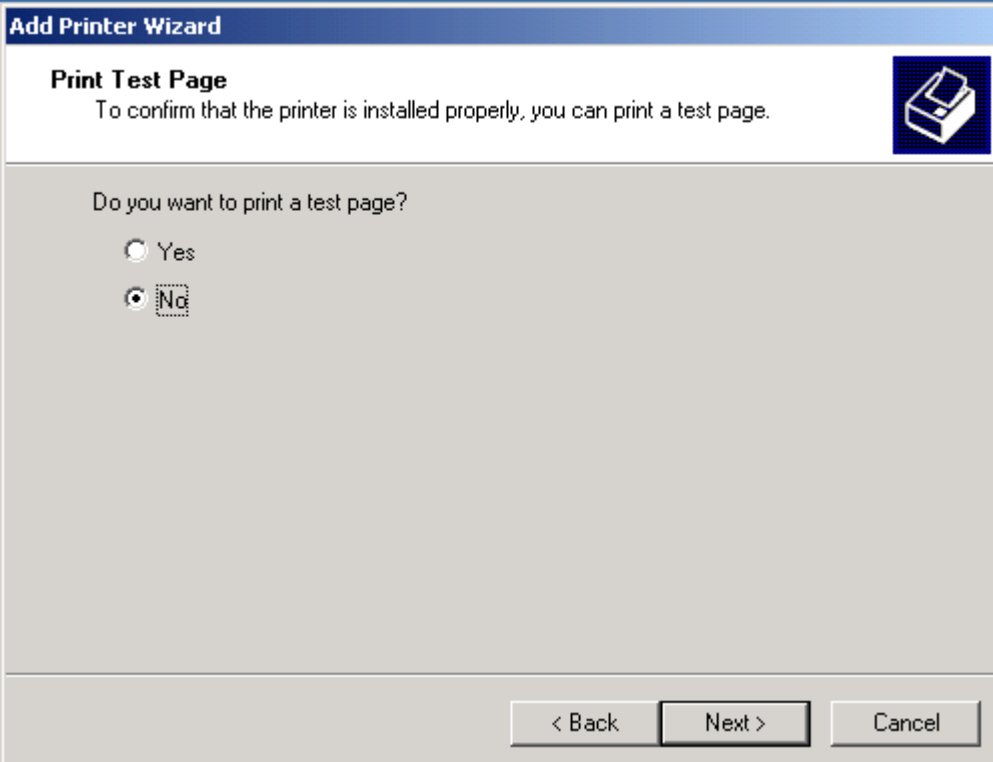
Indicate whether you want this printer to be available to other users. If you share this printer, you must provide a share name.

Do not share this printer.

Share as:

< Back   Next >   Cancel

11. Click the **Next** button.



**Add Printer Wizard**

**Print Test Page**  
To confirm that the printer is installed properly, you can print a test page.

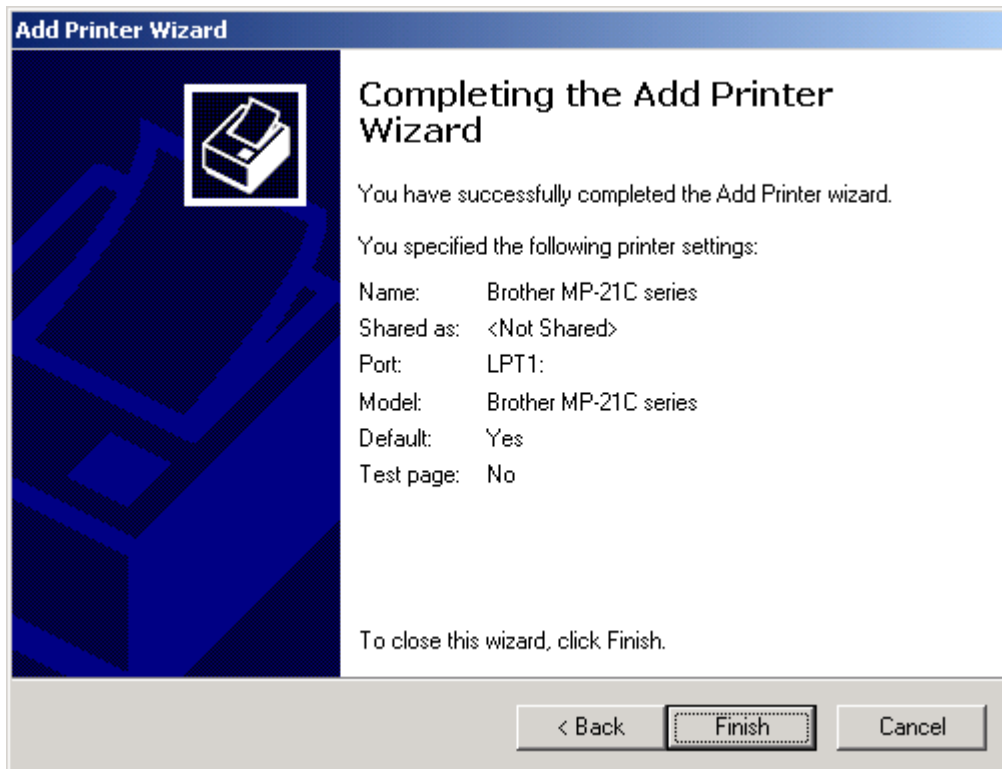
Do you want to print a test page?

Yes

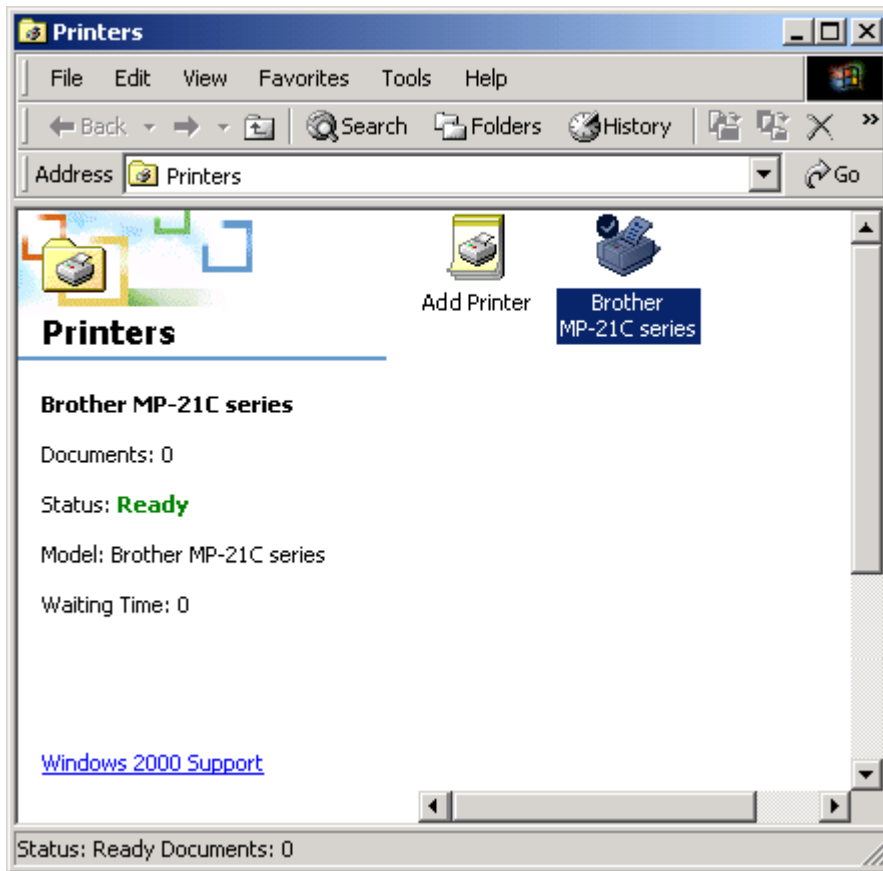
No

< Back   Next >   Cancel

12. Click the **Finish** button.



13. The Printer icon will be added to your **Printers** folder. **The setup is now completed.**



## [STEP-B] Install the Printer Interface Card driver

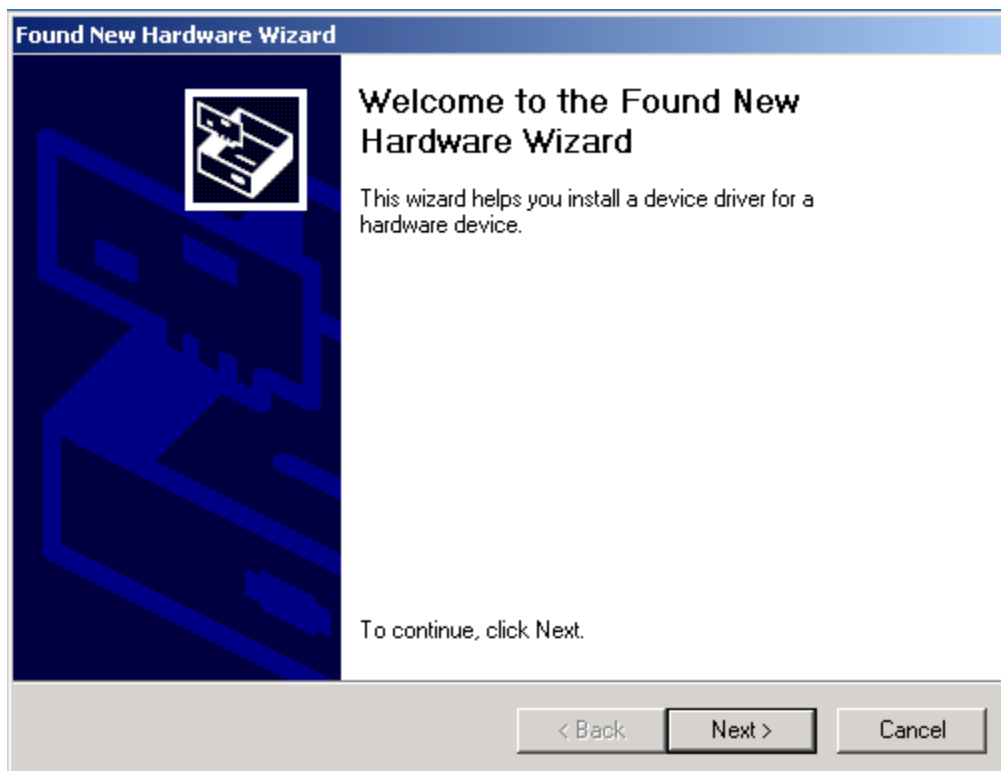
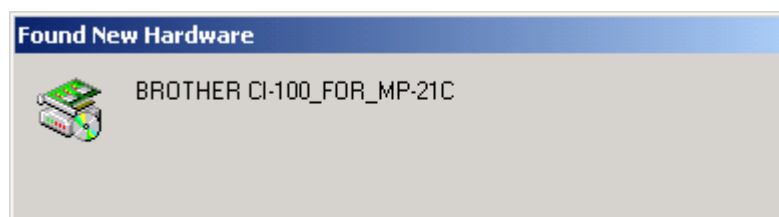
### **Note:**

If you are using a type of computer that has a port replicator, be sure to connect the port replicator to your computer before setting up the printer.

### **Note:**

In this STEP, **do not** connect the PC Card Cable to the Printer Interface Card.

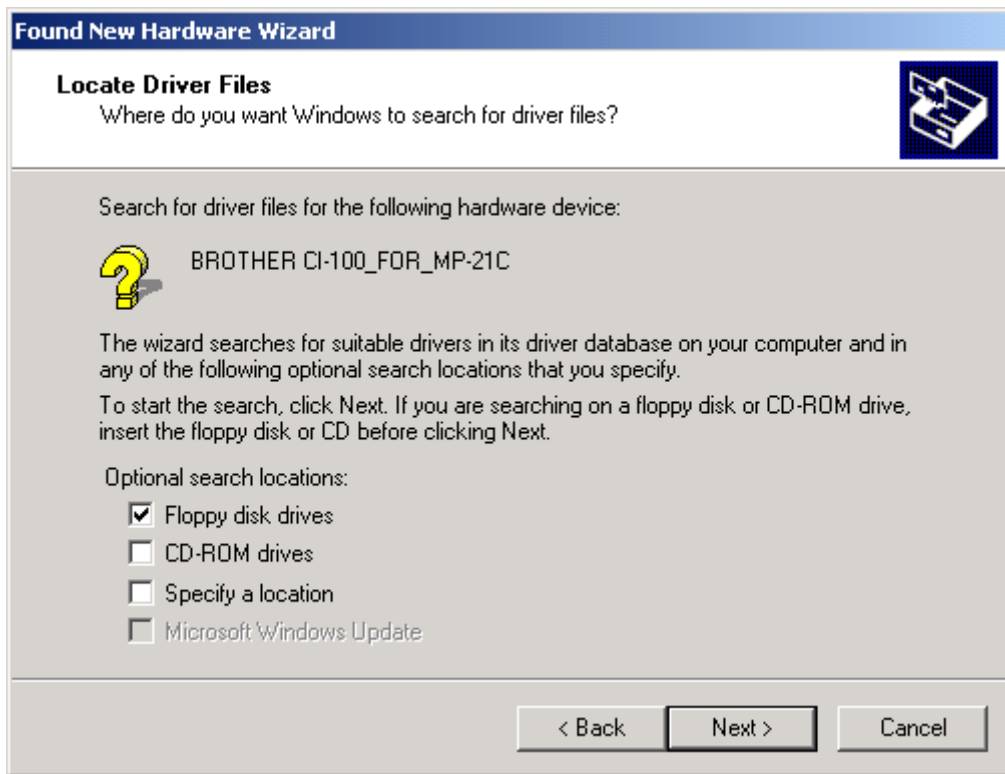
1. Make sure that the computer is turned on.
2. Insert the Printer Interface Card into your computer's PC Card slot with the label side face up. Be sure to insert the card fully into the slot.
3. The **Found New Hardware Wizard** will appear. Click the **Next** button.



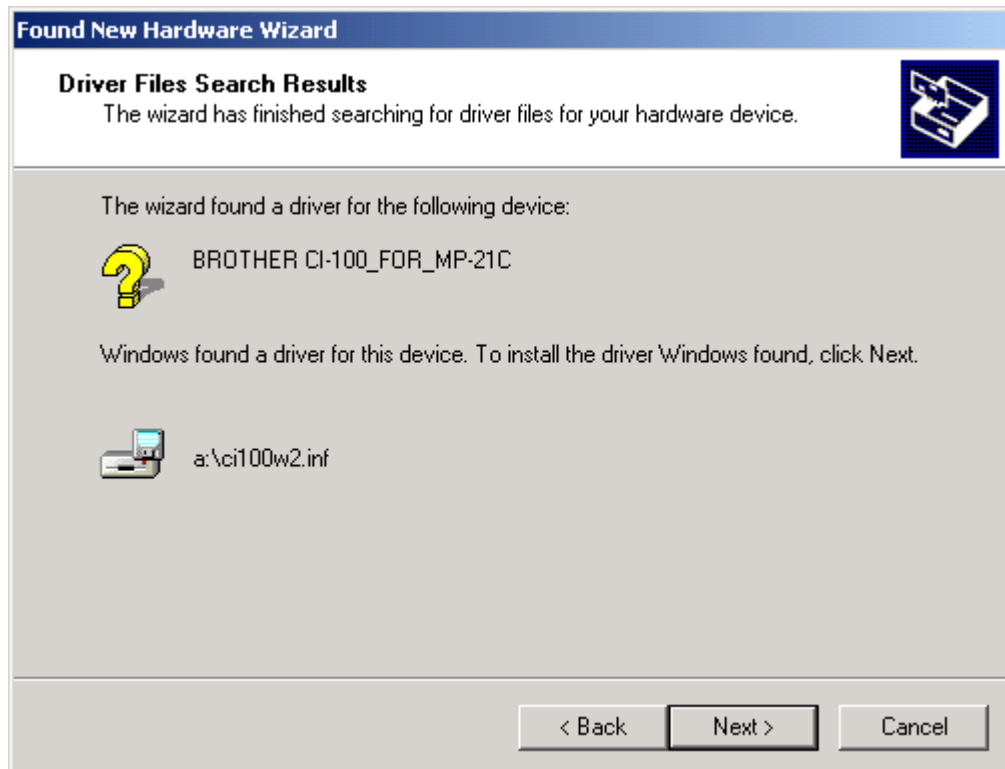
4. Click the **Search for a suitable driver for my device** box and click the **Next** button.



5. Check **Floppy disk drives** and click the **Next** button.



6. Click the **Next** button.



7. Click the **Finish** button. **The setup is now completed.**

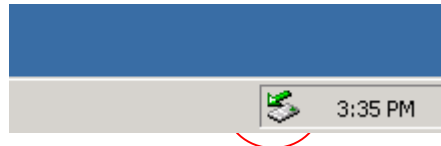


**Note: Print Port Setting (Printer Interface Card)**

If you connect a printer to your PC via Printer Interface Card, you need to select the Printer port. The Printer Interface Card (CI-100) is assigned LPT1, LPT2, or LPT3 by Windows operating system at plugged in your PC.

Confirm the port name of Printer Interface Card as follows, and re-select printer port of Printer properties.

1. Double click the PC Card Icon on task bar.



2. The port name is the letter inside of []. (LPT2 at this case)

