

# How to install the Printer driver for Windows 2000

## Install the driver

When the **Found New Hardware Wizard** appears, the Microsoft Printer Driver is installed automatically. You must replace it with the supplied Brother Printer Driver on the Brother Web site to use the Brother unique features.

Following the next steps to replace the Microsoft Printer Driver.

1. Click the **Start**, the **Settings**, and the **Printers** button on your Windows 2000.
2. The **Printers** appears, double-click the **Add printer** icon.
3. The **Add Printer Wizard** appears, click the **Next** button.



4. Click **Local printer**, make sure **Automatically detect and install my Plug and Play printer** check box is **not** selected.  
Click the **Next** button.

**Add Printer Wizard**

**Local or Network Printer**  
Is the printer attached to your computer?

If the printer is directly attached to your computer, click Local printer. If it is attached to another computer, or directly to the network, click Network printer.

Local printer  
 Automatically detect and install my Plug and Play printer  
 Network printer

< Back   Next >   Cancel

5. Select the Printer Port and click the **Next** button.

**Add Printer Wizard**

**Select the Printer Port**  
Computers communicate with printers through ports.

Select the port you want your printer to use. If the port is not listed, you can create a new port.

Use the following port:

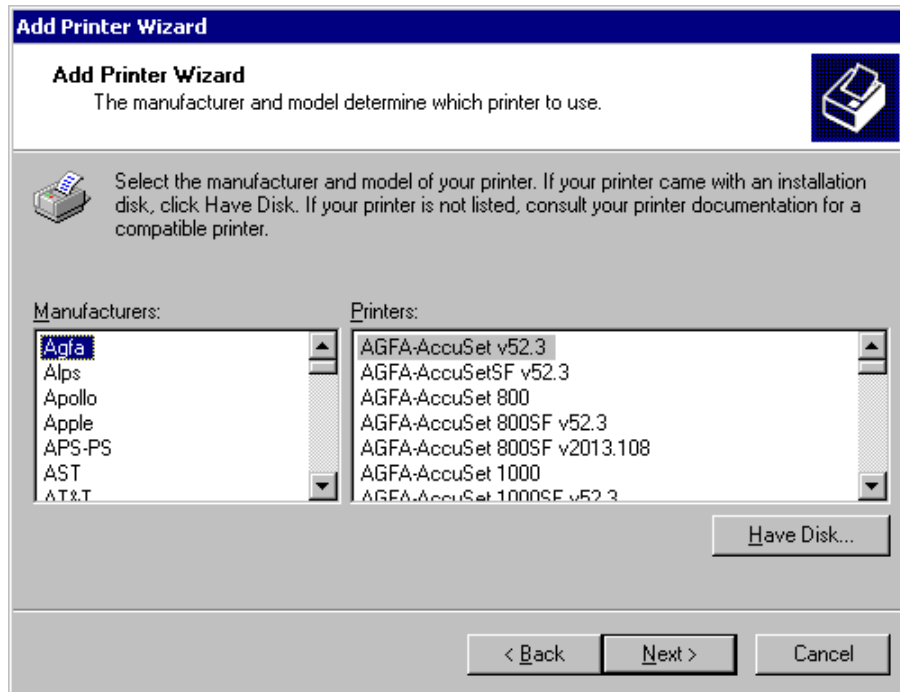
Port	Description	Printer
LPT1:	Printer Port	
LPT2:	Printer Port	
LPT3:	Printer Port	
COM1:	Serial Port	
COM2:	Serial Port	
COM3:	Serial Port	

Note: Most computers use the LPT1: port to communicate with a local printer.

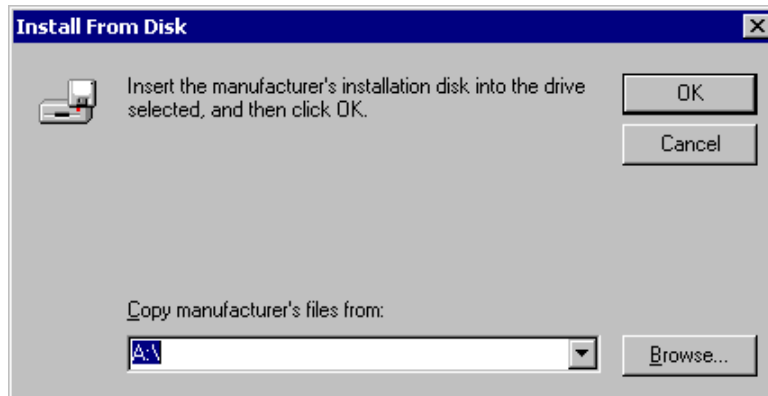
Create a new port:  
Type: Local Port

< Back   Next >   Cancel

6. Click the **Have Disk...** button.



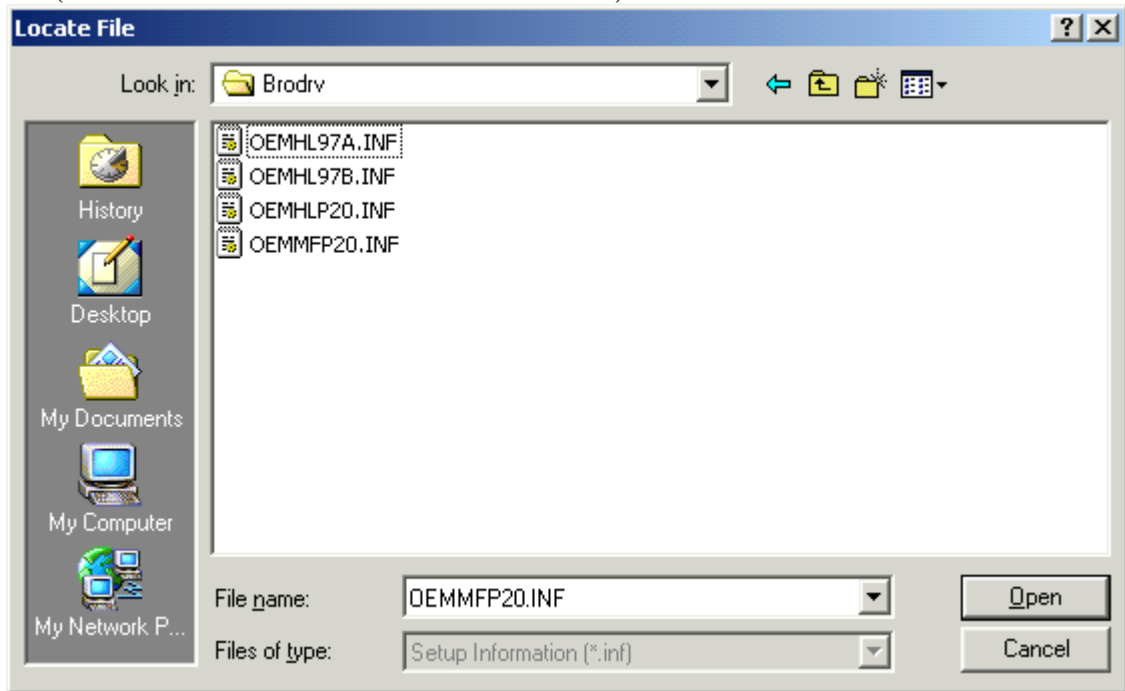
7. Click the **Browse...** button.



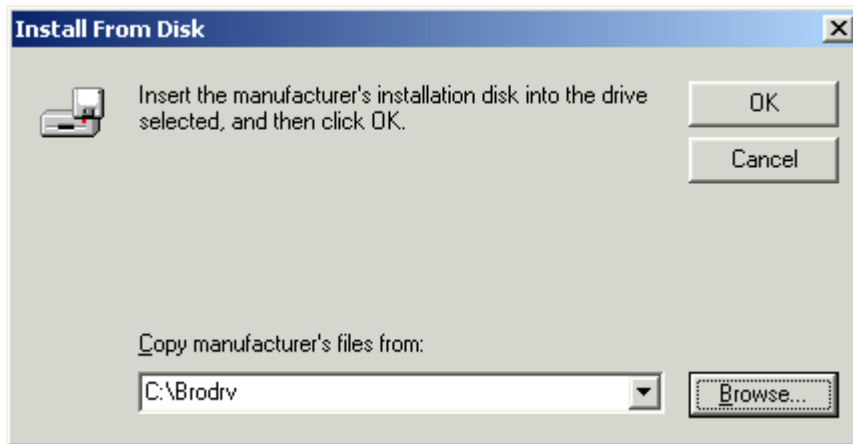
8. Select the drive where you download the printer driver. Select the directory where you download the printer driver, and click the **Open** button.  
e.g. C:\brodrv

**NOTE:**

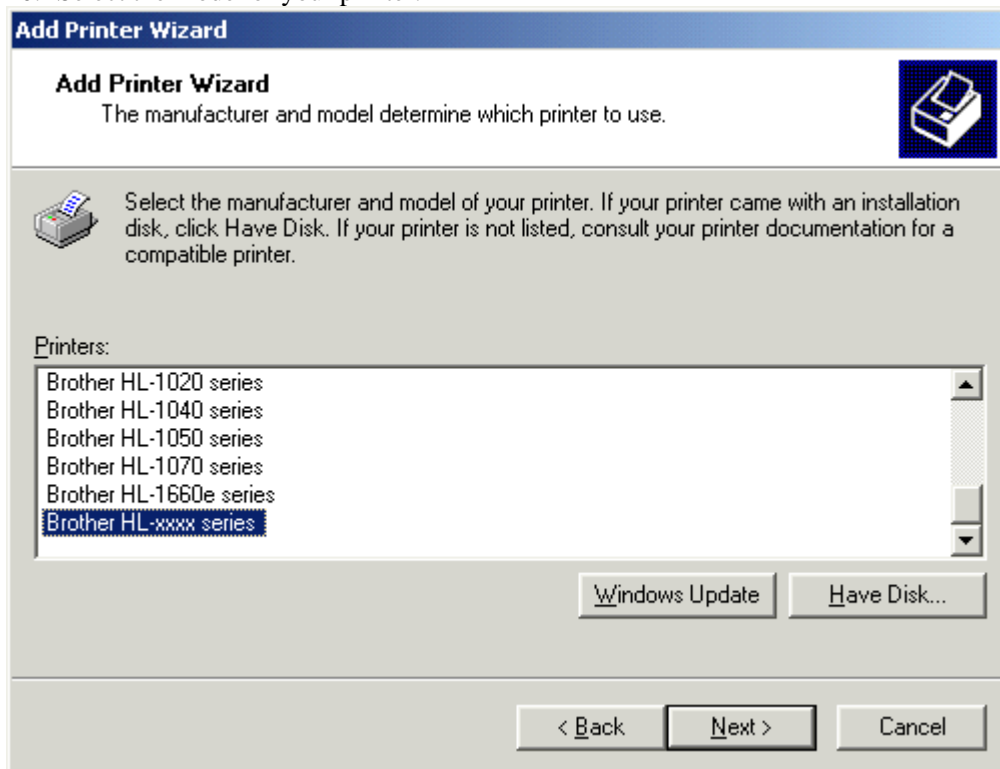
Several INF files may appear in the **Locate File**. You can use the default INF file selected. (You do not need to have to re-select the INF file.)



9. Select the **OK** button.



10. Select the model of your printer.



**NOTE:**

When installing the Brother printer driver into Windows 2000, you may see the following error message on your screen:

**\*Digital Signature Not Found**

At this point, click the **YES** button to continue the installation. The driver will be installed onto your system.



11. The printer icon will be added to your **Printers** folder.

**The Microsoft Printer Driver has now been replaced with the Brother Printer Driver.**

